



19 Charles Arden Close

, Southampton, SO16 4HS

£1,200 Per month

Two Bedrooms | Allocated Parking | UNFURNISHED - White Goods Included | First Floor Apartment - Central Heating | Built In Wardrobes | Available March 2025 | All viewings, from Saturday 15th February 2025 (due to to tenant in situ)

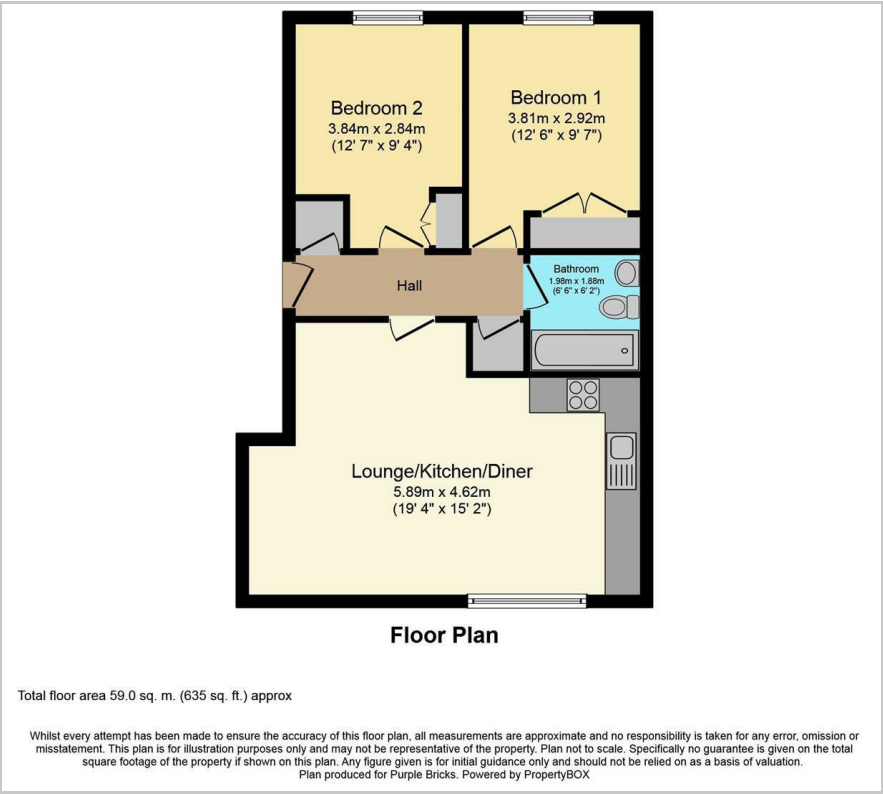
- Two Bedrooms
- Allocated Parking
- UNFURNISHED - White Goods Included
- First Floor Apartment - Central Heating
- *Barratt's 'Cardinal Park' Development*
- Built In Wardrobes
- Open Plan Living With Fitted Kitchen
- No Pets
- Available March 2025
- All viewings, from Saturday 15th February 2025 (due to to tenant in situ)

Viewing

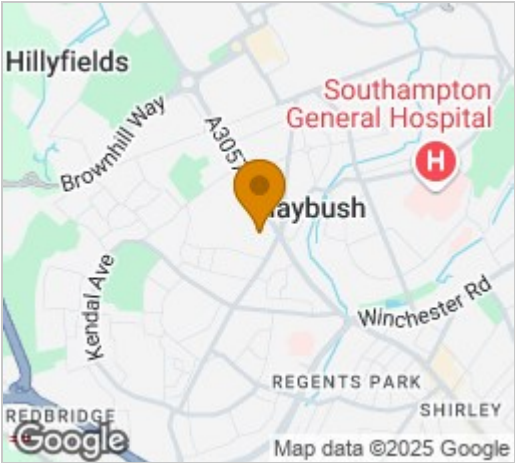
Please contact our ROK Marsh Office on 02393233267 if you wish to arrange a viewing appointment for this property or require further information.



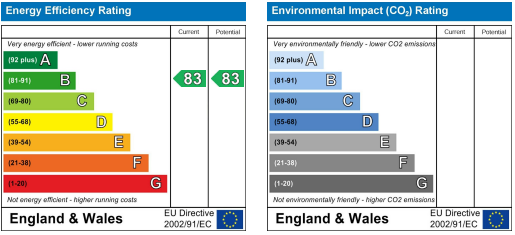
Floor Plan



Area Map



Energy Efficiency Graph



These particulars, whilst believed to be accurate are set out as a general outline only for guidance and do not constitute any part of an offer or contract. Intending purchasers should not rely on them as statements of representation of fact, but must satisfy themselves by inspection or otherwise as to their accuracy. No person in this firms employment has the authority to make or give any representation or warranty in respect of the property.